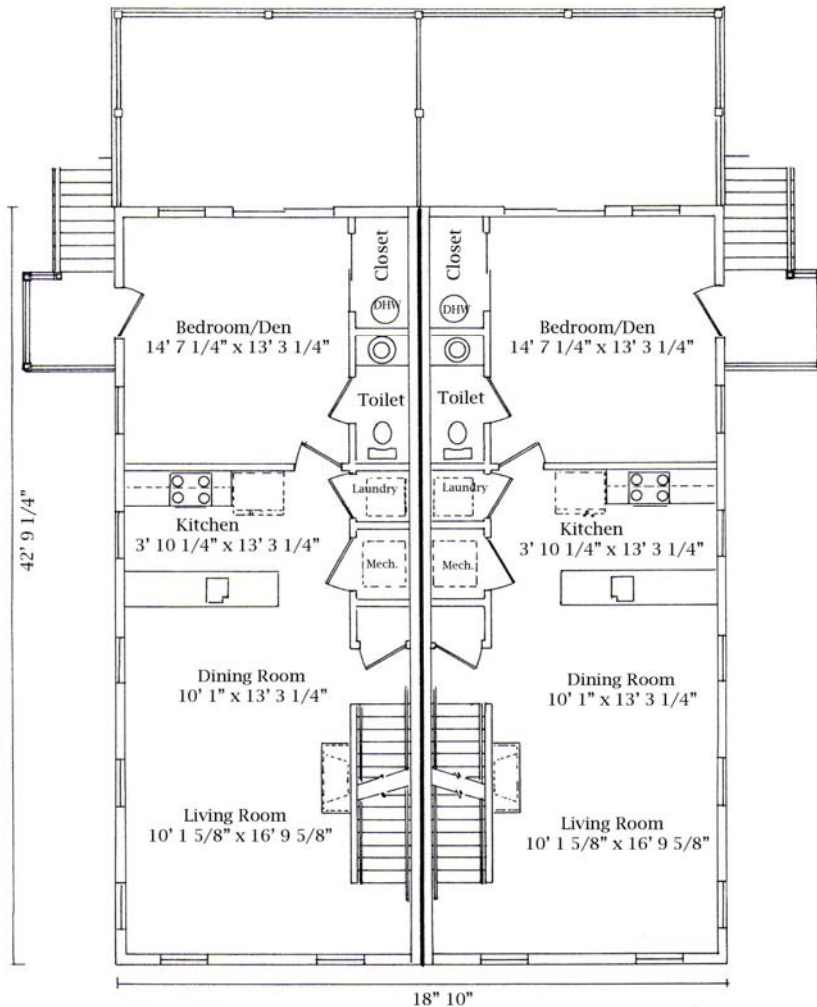


# Canal Crossing Condominiums

## At Old Bridge Road

### On Cape Cod Canal, Massachusetts

#### The Dune Unit 3 (left) and D2 (right)



#### First Floor Features

- ❖ Spacious, open floorplan
- ❖ Granite countertops
- ❖ Stainless steel kitchen appliances
- ❖ Crown molding
- ❖ Tiled kitchen floor
- ❖ Gas fireplace
- ❖ Half bath with tile floor
- ❖ Gas hot air heat
- ❖ Air conditioning
- ❖ Insulated doors and windows

#### First Floor Plan

All measurements are approximate

Offered by RE/MAX Bayside  
1 Shipyard Lane  
Cataumet, MA 02534

508-563-9777  
www.canalcrossing.net  
www.remax-bayside.com

©Harding Realty Corp. 2007

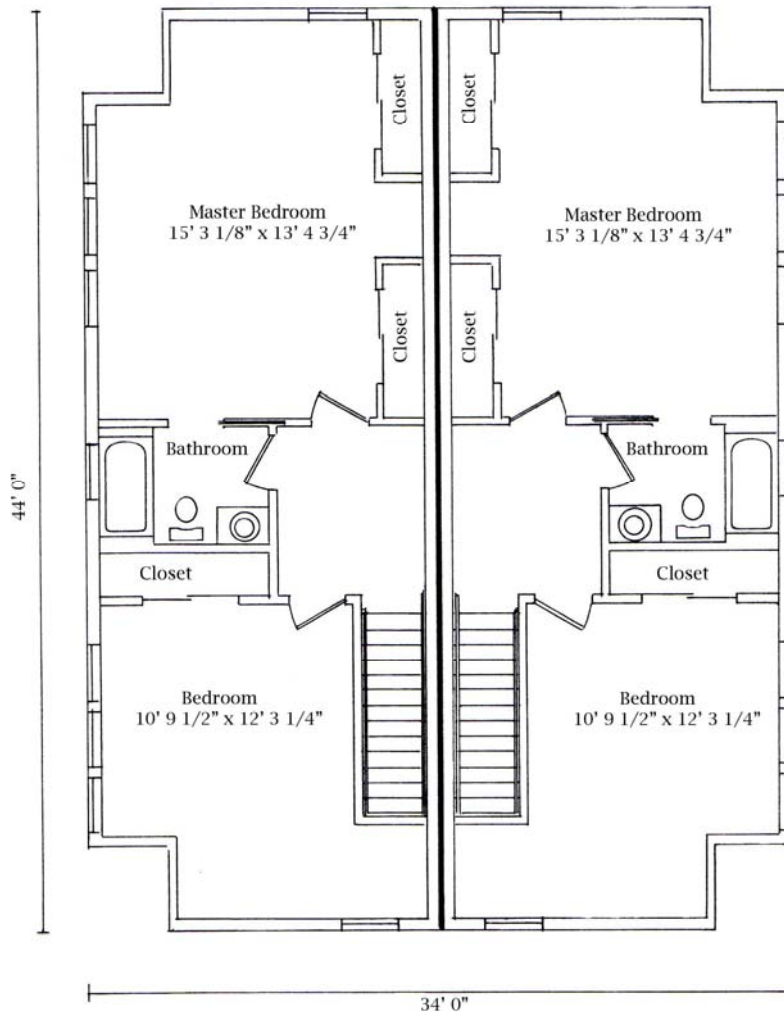
*Information furnished regarding this property is deemed accurate at the time of publication. The details contained herein are submitted subject to errors, omissions, change of price, rental, prior sale or lease, or withdrawal without notice. RE/MAX Bayside has gathered and passes on this information in good faith and assumes no liability for any inaccuracies.*

# Canal Crossing Condominiums

## At Old Bridge Road

### On Cape Cod Canal, Massachusetts

The Dune  
Unit D3 (left) and D2 (right)



**Second Floor Plan**  
All measurements are approximate

#### Second Floor Features

- ❖ Open, spacious master suite
- ❖ Tiled bathroom floor

Offered by RE/MAX Bayside  
1 Shipyard Lane  
Cataumet, MA 02534

508-563-9777  
[www.canalcrossing.net](http://www.canalcrossing.net)  
[www.remax-bayside.com](http://www.remax-bayside.com)

©Harding Realty Corp. 2007

*Information furnished regarding this property is deemed accurate at the time of publication. The details contained herein are submitted subject to errors, omissions, change of price, rental, prior sale or lease, or withdrawal without notice. RE/MAX Bayside has gathered and passes on this information in good faith and assumes no liability for any inaccuracies.*